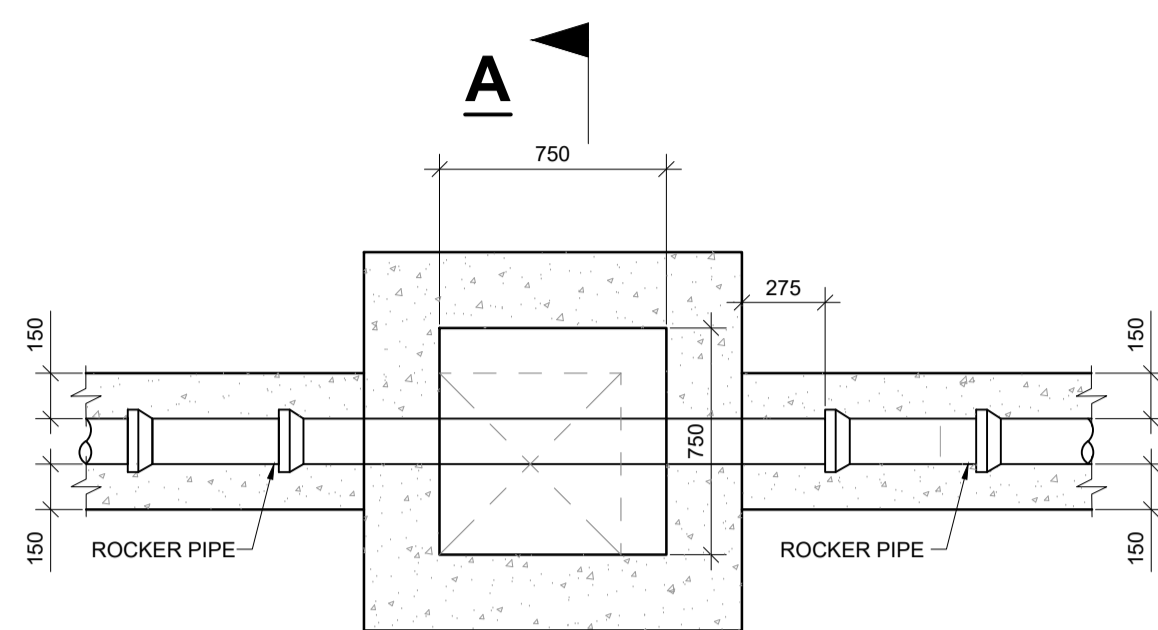


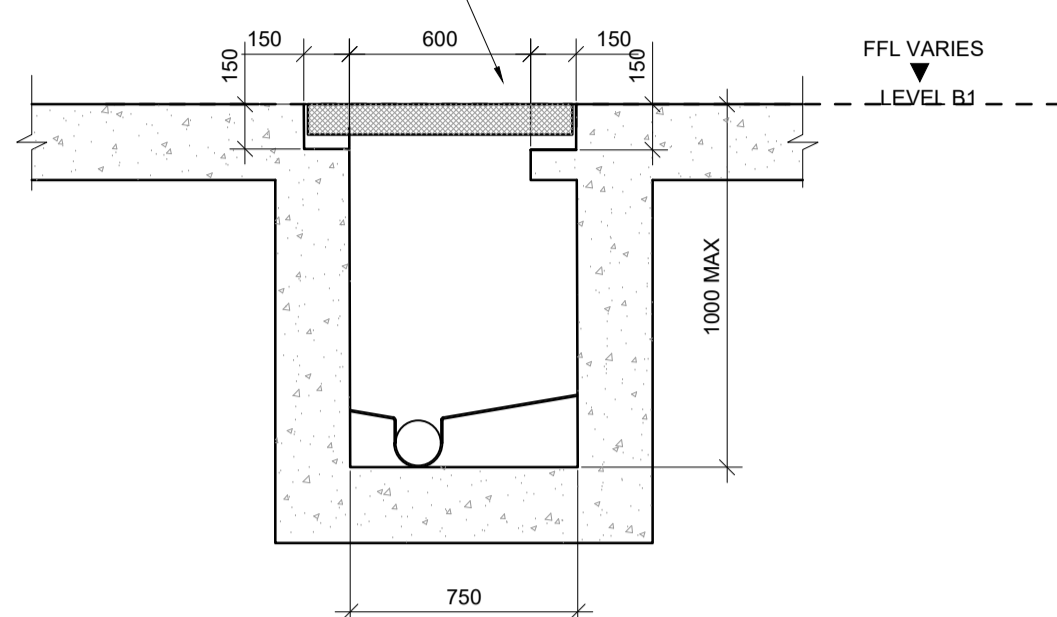
NOTES

1. THIS DRAWING IS TO BE READ IN CONJUNCTION WITH ALL ENGINEERS & ARCHITECT'S DRAWINGS FIGURED DIMENSIONS ONLY (NOT SCALING) TO BE USED. WHERE A CONFLICT OF INFORMATION EXISTS OR IF IN ANY DOUBT - 'ASK'.
2. CONSULTANTS TO BE INFORMED IMMEDIATELY OF ANY DISCREPANCIES BEFORE WORK PROCEEDS.

1. MANHOLE IN CAR PARKING AREAS TO BE SOLID TOP DUCTILE IRON COVERS, CLASS C250 AS AGREED WITH THE ENGINEER. COVER TO BE GAS, AIR AND WATERTIGHT
2. MANHOLES IN INTERNAL AREAS TO BE RECESSED TO MATCH FLOOR FINISH. CLASS C250 OR B125 AS AGREED WITH THE ENGINEER. COVERS TO BE GAS, AIR AND WATERTIGHT

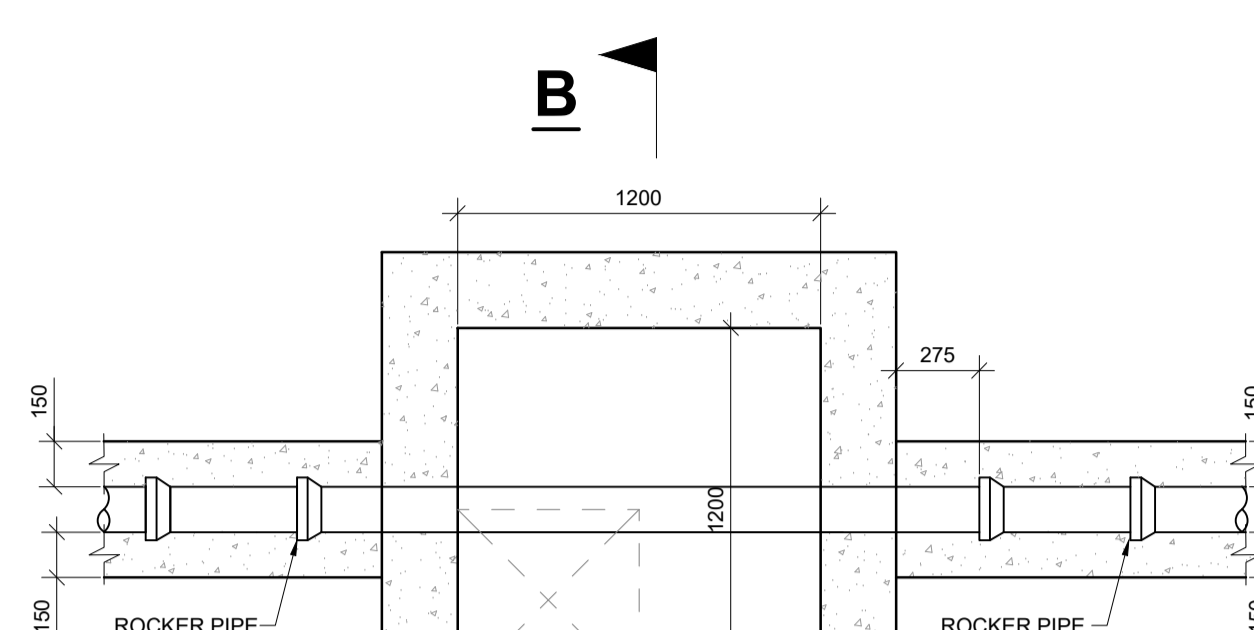


PLAN

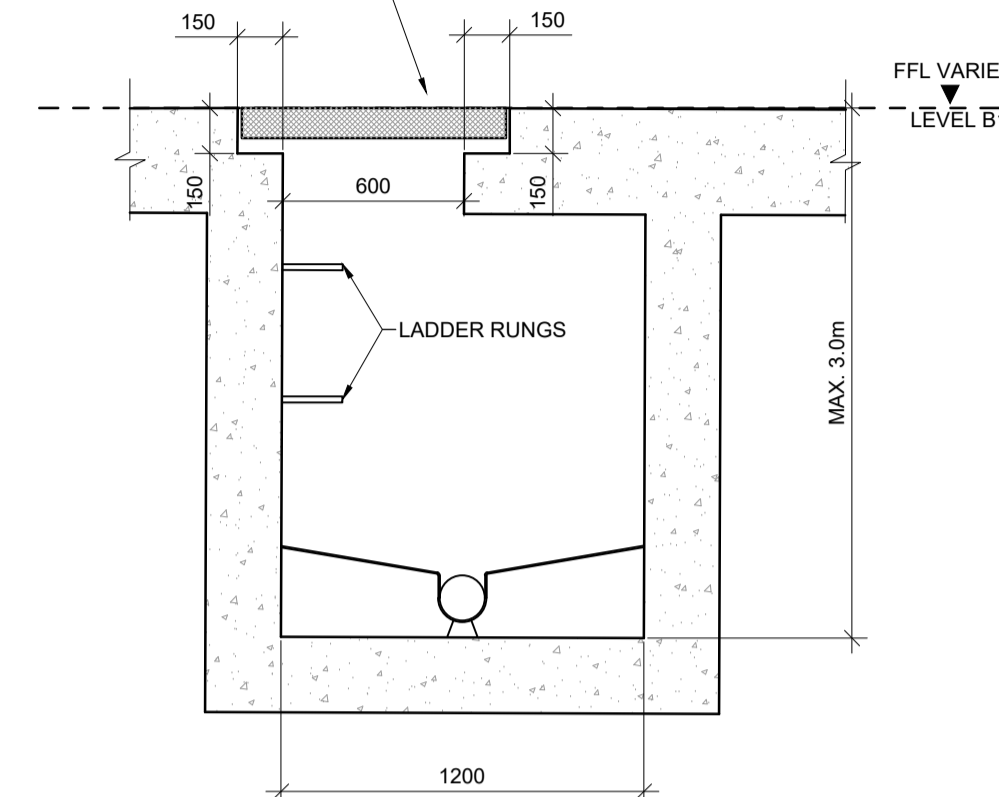


SECTION A-A

1. MANHOLE IN CAR PARKING AREAS TO BE SOLID TOP DUCTILE IRON COVERS, CLASS C250 AS AGREED WITH THE ENGINEER. COVER TO BE GAS, AIR AND WATERTIGHT
2. MANHOLES IN INTERNAL AREAS TO BE RECESSED TO MATCH FLOOR FINISH. CLASS C250 OR B125 AS AGREED WITH THE ENGINEER. COVERS TO BE GAS, AIR AND WATERTIGHT



PLAN



SECTION B-B

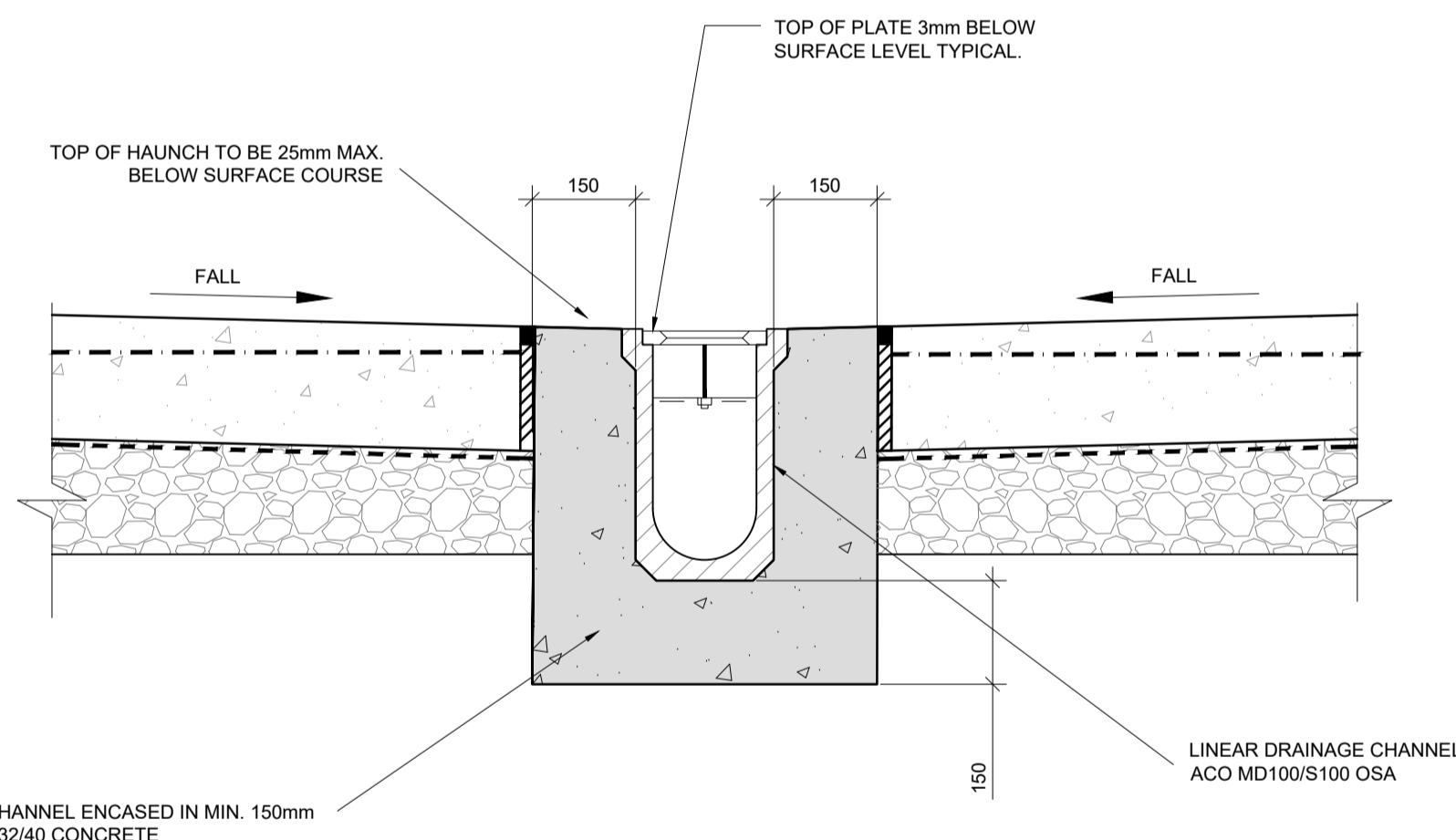
SHALLOW INSPECTION CHAMBER DETAIL (MAX 1m DEPTH TO INVERT)

SCALE @ A1: 1:25
SCALE @ A3: 1:50

DEEP MANHOLE CHAMBER DETAIL (MAX 3m DEPTH TO INVERT)

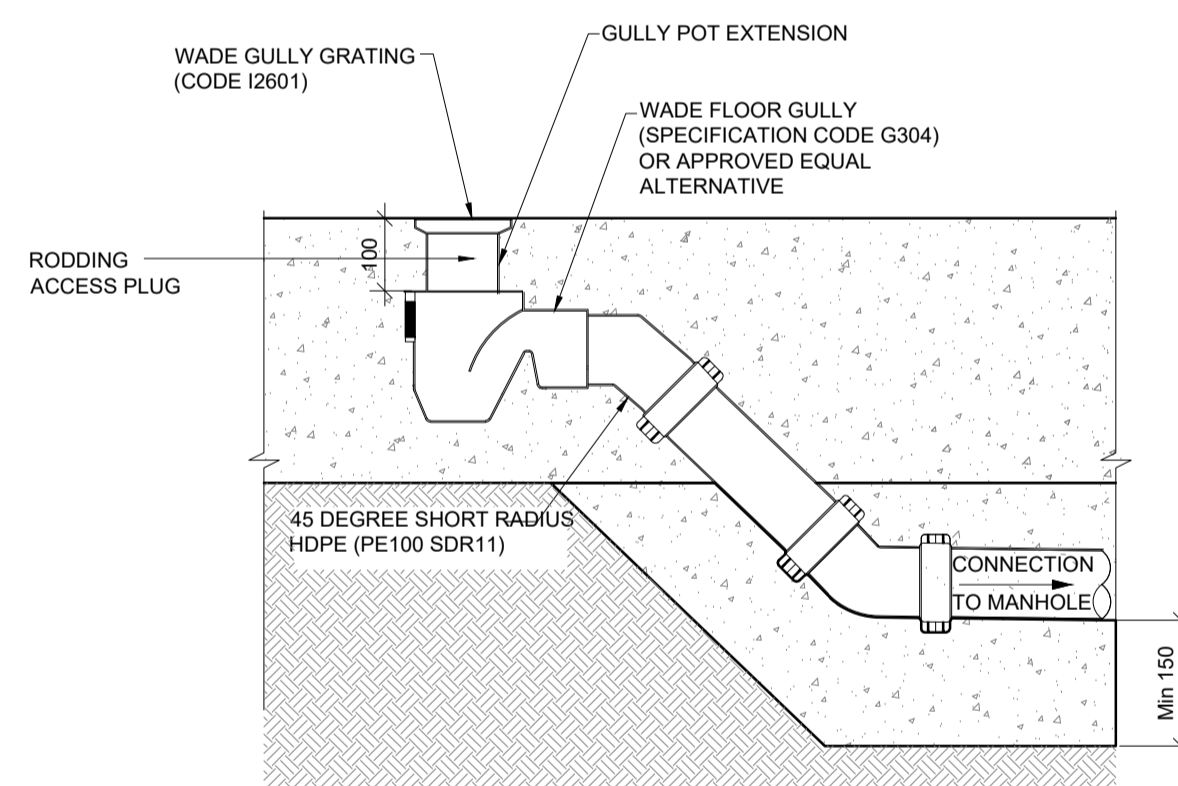
SCALE @ A1: 1:25
SCALE @ A3: 1:50

SPECIFICATION CODE	OUTLET PIPE SIZE	"A"	"B"	"C"	"D"	"E"	"WADE PART NO"
G304	100mm	205	92	112	NO BEAD	190	20107439



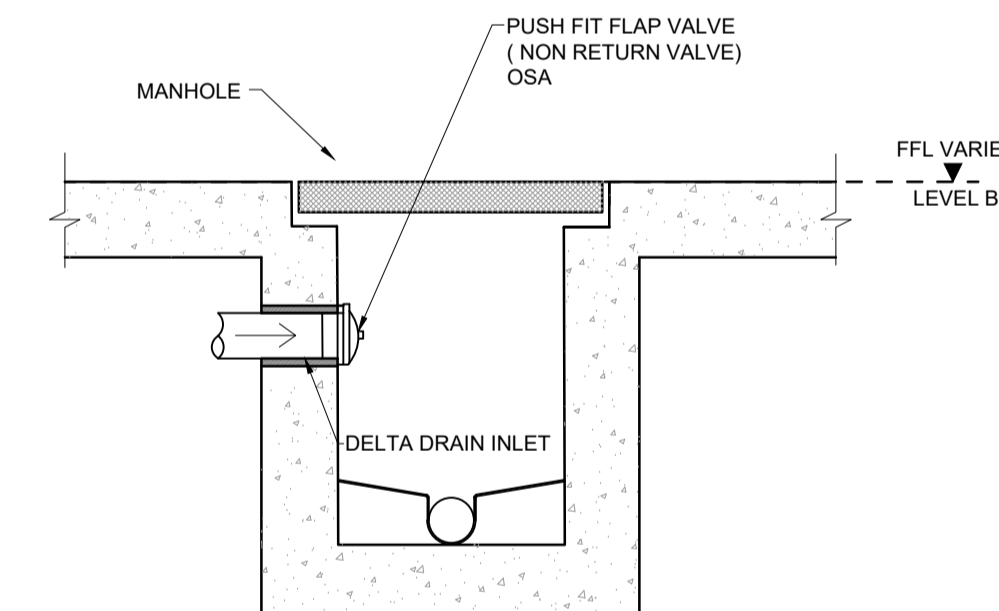
TYPICAL DRAINAGE CHANNEL DETAILS

SCALE @ A1: 1:10
SCALE @ A3: 1:20



TYPICAL PAVING GULLY DETAILS

SCALE @ A1: 1:10
SCALE @ A3: 1:20



DELTA DRAIN INLET IN MANHOLE DETAIL

SCALE @ A1: 1:25
SCALE @ A3: 1:50

ISSUE	DATE	DESCRIPTION	BY
PL2	31.05.22	PLANNING ISSUE	KS
PL1	09.11.21	ISSUED FOR PRE-APPLICATION SUBMISSION	KS

Project Engineer: CIARAN O'RAFFERTY | Project Director: CIARAN KENNEDY

BM STAGE

PLANNING

BM Dublin Office: Sandwith House, 52-54 Lower Sandwith Street, Dublin 2, Ireland. Tel: (01) 677 3200 Fax: (01) 677 3154
London Office: 12 Mill Street, London SE1 2AY, United Kingdom Tel: (0044) 20 3750 3530
 Consulting Engineers, Civil, Structural, Project Management. E-mail: bmcs@bmcs.ie Web: www.bmcs.ie

BAFRETT MAHONY The Institution of Structural Engineers **ACEI** International Federation of Consulting Engineers

CLIENT
CWTC MULTI FAMILY ICAV ACTING SOLELY IN RESPECT OF ITS SUB FUND DBTR SCR1 FUND

PROJECT TITLE
BAILEY GIBSON SHD 2 BM PROJECT No.
19117

REFERENCE SUITABILITY REVISION

DRAWING TITLE
PROPOSED BASEMENT DRAINAGE DETAILS SHEET 1 OF 2

DWG DRAWING REFERENCE STATUS REVISION
BGL-BMD-ZZ-B1-DR-C-1222 PL2